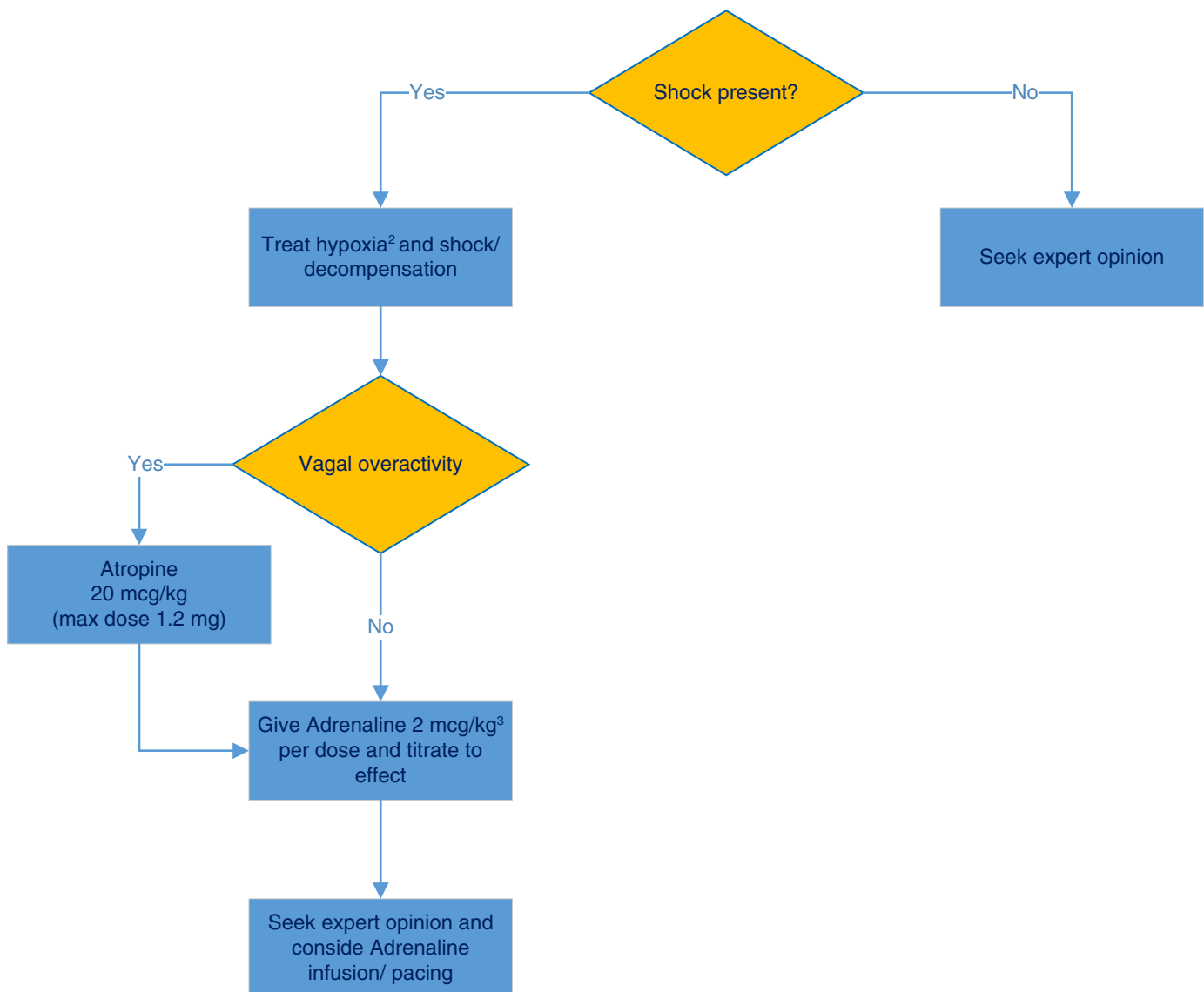


Management of Bradycardia

If unresponsive and heart rate less than 60 beats per minute despite oxygen, start chest compressions

Signs of shock: bradycardia, tachycardia, BP < 5th centile¹, CRT > 2 secs, weak or impalpable peripheral pulses

Signs of circulatory compromise include signs of vital organ perfusion compromise, altered consciousness, tachypnoea



- 1 See table on inside front cover
- 2 Treat hypoxia- optimise oxygenation including positive pressure ventilation if required
- 3 Up to max 10 mcg/kg